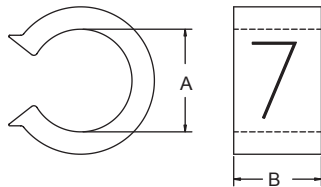


RCCN 日成OC型开口硬质配线标志 OC Cable Marker



单位/Unit:mm

型号 Item No.	适用电线 Suitable Wire		号码种类 Std. Markings	包装 Packing
	电线称呼 Cable named mm ²	标志内径A Marker's inner dia. mm		
OC-1	0.5~0.75	2.5~3.0	0,1,2,...9 A,B,C,D..Z +,-,≡空白Blank	每卷/Roll 1000pcs
OC-2	1.25~2.0	3.2~3.6		每卷/Roll 1000pcs
OC-3	3.5~5.5	4.2~5.1		每卷/Roll 1000pcs
OC-4	5.5~8.0	5.1~6.2		每卷/Roll 500pcs

材质: 硬质PVC.

特质: O型特点:标志体近於圆形合於电线上,不占空间.

C型优点:线路配好後再嵌入即可,不易脱落.

用途: 适用于电线已经接好再做记号.特适合网络布线的应用

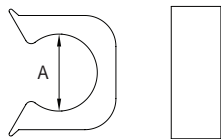
Material: Rigid PVC.

Features: O type's features:save space

C type's features:uneasy to fall off

Use: Suitable to install cables

RCCN 日成CM型开口硬质配线标志 CM Cable Marker



单位/Unit:mm

型号 Item No.	适用电线 Suitable Wire		号码种类 Std. Markings	包装 Packing
	电线称呼 Cable named mm ²	标志内径A Marker's inner dia. mm		
CM-0.75	0.75	3.0	0,1,2,...9 A,B,C,D..Z +,-,≡空白Blank	每包/Bag100pcs
CM-1.25	1.25	3.2		
CM-2.0	2.0	3.6		
CM-3.5	3.5	4.2		
CM-5.5	5.5	5.1		
CM-8.0	8.0	6.2		

材质: 硬质PVC.

特质: O型特点:标志体近於圆形合於电线上,不占空间.

C型优点:线路配好後再嵌入即可,不易脱落.

用途: 适用于电线已经接好再做记号.特适合网络布线的应用

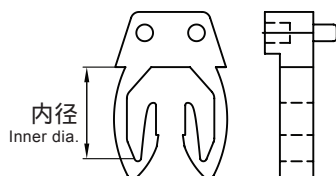
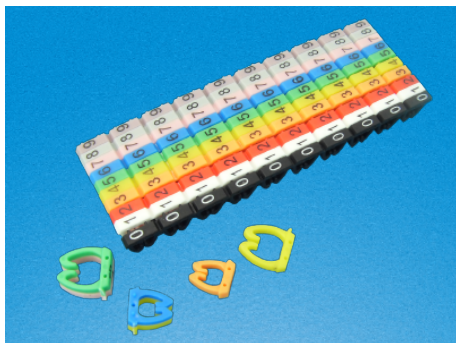
Material: Rigid PVC.

Features: O type's features:save space

C type's features:uneasy to fall off

Use: suitable to install cables

RCCN 日成SM型开口网线配线标志 SM Cable Marker



单位/Unit:mm

型号 Item No.	适用电线 Suitable Wire		号码种类 Std. Markings	包装 Packing
	电线称呼 Cable named mm ²	标志内径A Marker's inner dia. mm		
SM-5	5.5	4-6	0-9	0-9各10粒/1套
SM-6	14	6-8	0-9	0-9各10粒/1套

材质: 硬质PP.

特质: 标志体近於圆形合於电线上,不占空间.线路配好後再嵌入即可,不易脱落.

用途: 适用于电线已经接好再做记号.特适合网络布线的应用.

说明: 可按用户要求独立配号.如只需要1,2,3号各50粒.

订购型号例:SM-5,1套,指0-9号各10粒,共100粒.

SM-5适合五类网线标识,SM-6适合六类网线标识.

Material: rigid PP.

Features: save space,can be installed after fixing the cables uneasy to fall off

Use: suitable to install cables.

Note: can prepared numbers as customers' request.like 1,2,3 50pcs each.

Order part no.:SM-5,1/set,means 0 to 9 10 pcs each,total 100pcs.