

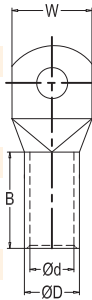
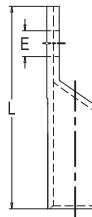
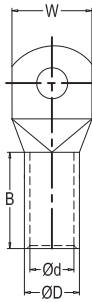
RCCN 日成TL铜管端子 TL With long Copper Ture Terminals



说明：本系列配套液压工
具YYT-70/YYT-120/YYT-240

Use note: this series installed
by tool of YYT-70/YYT-120/YYT-240

型号	尺寸 DIMENSION					
Item No.	E	D ϕ	d ϕ	W	B	L
TL10-6	6.4	6.9	4.7	11.9	19.0	35.0
TL10-8	8.3	6.9	4.7	13.5	19.0	38.0
TL16-6	6.4	7.8	5.6	11.9	23.0	39.0
TL16-8	8.3	7.8	5.6	13.6	23.0	42.0
TL25-8	8.3	9.5	7.1	14.0	29.0	50.0
TL25-10	10.5	9.5	7.1	16.0	29.0	53.0
TL35-8	8.3	11.0	8.2	16.5	30.0	54.0
TL35-10	10.5	11.0	8.2	16.5	30.0	58.0
TL50-10	10.5	12.5	9.5	17.9	35.0	64.0
TL50-12	13.0	12.5	9.5	17.9	35.0	64.0
TL70-10	10.5	15.0	11.5	21.5	38.0	70.0
TL70-12	13.0	15.0	11.5	21.5	38.0	70.0
TL95-14	14.5	17.0	13.5	24.7	43.0	88.0
TL95-16	16.5	17.0	13.5	24.7	43.0	88.0
TL120-14	14.5	20.0	15.6	28.9	49.0	94.0
TL120-16	16.5	20.0	15.6	28.9	49.0	94.0
TL150-14	14.5	21.0	16.5	30.4	56.0	102.0
TL150-16	16.5	21.0	16.5	30.4	56.0	102.0



型号	尺寸 DIMENSION					
Item No.	E	D ϕ	d ϕ	W	B	L
TL185-14	14.5	23.6	18.4	37.0	63.0	113.0
TL185-16	16.5	23.6	18.4	37.0	63.0	113.0
TL240-14	14.5	26.4	21.2	38.5	66.0	119.0
TL240-16	16.5	26.4	21.2	38.5	66.0	119.0
TL300-14	14.5	28.6	23.4	42.0	77.0	133.0
TL400-16	16.5	32.8	26.8	48.0	71.7	140.0
S-TL10-6	6.4	6.8	4.7	11.9	18.0	35.0
S-TL10-8	8.3	6.8	4.7	15.0	18.0	38.0
S-TL16-6	6.4	7.8	5.6	11.9	21.5	39.0
S-TL16-8	8.3	7.8	5.6	15.0	21.5	41.5
S-TL25-8	8.3	9.4	7.1	15.0	29.0	50.0
S-TL25-10	10.5	9.4	7.1	18.0	29.0	55.0
S-TL35-8	8.3	11.3	8.7	16.0	31.0	53.0
S-TL35-10	10.5	11.3	8.7	19.0	31.0	57.0
S-TL50-10	10.5	12.6	9.8	20.0	35.0	63.0
S-TL50-12	13.0	12.6	9.8	21.0	35.0	67.0
S-TL70-10	10.5	14.7	11.5	21.5	39.0	69.0
S-TL70-12	13.2	14.7	11.5	21.5	39.0	71.0
S-TL95-12	13.0	16.9	13.5	24.7	46.0	79.0
S-TL95-14	14.5	16.9	13.5	24.7	46.0	83.0
S-TL95-16	16.5	16.9	13.5	27.0	46.0	86.0
S-TL120-12	13.0	19.9	15.6	28.9	51.0	87.0
S-TL120-14	14.5	19.9	15.6	28.9	51.0	91.0
S-TL120-16	16.5	19.9	15.6	28.9	52.0	95.0
S-TL150-12	13.0	20.9	16.5	30.4	56.0	99.0
S-TL150-14	14.5	20.9	16.5	30.4	56.0	103.0
S-TL150-16	16.5	20.9	16.5	30.4	56.0	103.0
S-TL185-12	13.0	23.7	18.8	34.0	62.0	108.0
S-TL185-14	14.5	23.7	18.8	34.0	62.0	112.0
S-TL185-16	16.5	23.7	18.8	34.0	62.0	113.0
S-TL240-12	13.0	26.2	21.2	38.4	66.0	114.0
S-TL240-14	14.5	26.2	21.2	38.4	66.0	118.0
S-TL240-16	16.5	26.2	21.2	38.4	66.0	119.0
S-TL300-14	14.5	28.6	23.4	41.7	75.0	132.0
S-TL300-16	16.5	28.6	23.4	41.7	75.0	132.0
S-TL400-16	16.5	32.8	26.8	47.8	79.0	140.0
S-TL500-16	16.5	38.4	29.8	54.8	78.0	143.0