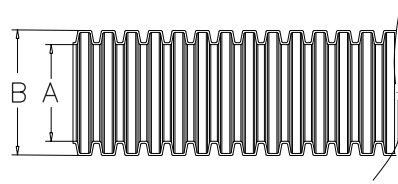


RCCN 日成PA尼龙波纹管 Polyethylene Corrugated Tubing



材 质: 进口PA6 尼龙(Polyamide)
温 度:-40 -125 ,短时达到150
产品认证: 美国UL,欧洲CE, 欧洲环保
ROHS,REACH.

防火等级:94HB.

特 性:柔软有韧性,抗扭曲;机械,强度好可以承受重的负载;耐酸,耐切割屑液,润滑油,冷却液等;表面有光泽,耐摩擦;黑色耐紫外线,机械强度高;用 途:可保护电线电缆不受外力磨损及绝缘承载能力:可以承受脚踩和更高强度的重压,不变形,但可以迅速恢复并且本身无任何损伤.

应用场合:风电发电,地铁轨道,电力机车的车厢内使用;机械制造,电气绝缘保护,公共交通

设备:照明设备;汽车制造;航空设备;

使用方法:将电线电缆穿入管内,再配合日成系列软管接头使用即可.

备 注:特殊按包装长度有起订量要求.

Material:PA (Polyamide)

Work Temperature:-40 to125 ,
150 in short time

Color:black

Certificates: CE,ROHS,REACH.

Characteristics:good luster of exterior,stronger machinism loading, perfect flexible

Functions:insulated,protect cables and wires

Loading ability:uneasy to change shape,reshape speedly without hurt body

Where to use:Equipment,machines, electricity sets,and so on.

How to use:insert cables or wires to RCCN flexible conduit

Remarks: special packing length

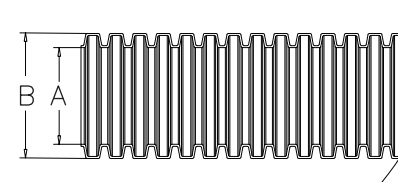
come with MOQ work temperature tested according to RCCN factory

test machines

单位/Unit:mm

型号	Item No.	规格	内径	外径	静态弯曲半径	动态弯曲半径	包装
黑色 Black Ral9005	深灰色 Gray Ral7037	Sizes	I.D. A	O.D. B	Stat.r	Dyn.r	Packing M
BG-07NB	BG-07NG	1/4"	6.5	10.0	13	35	100M
BG-10NB	BG-10NG	5/16"	10.0	13.0	20	45	100M
BG-12NB	BG-12NG	-	12.0	15.8	35	55	100M
BG-15NB	BG-15NG	3/8"	14.3	18.5	40	65	100M
BG-17NB	BG-17NG	1/2"	17.0	21.2	45	75	100M
BG-23NB	BG-23NG	3/4"	23.0	28.5	55	100	50M
BG-29NB	BG-29NG	1"	29.0	34.5	65	120	50M
BG-36NB	BG-36NG	1 1/4"	36.0	42.5	90	150	50M
BG-48NB	BG-48NG	2"	48.0	54.5	100	190	25M
BG-08NB	BG-08NG	9/32"	8.0	11.5	13	25	100M
BG-11NB	BG-11NG	-	11.0	14.0	20	45	100M
BG-16NB	BG-16NG	-	14.5	20.0	45	75	100M
BG-20NB	BG-20NG	-	20.0	25.0	50	85	50M
BG-25NB	BG-25NG	-	25.5	31.5	50	110	50M

RCCN 日成PA尼龙阻燃波纹管 Polyethylene Corrugated Tubing



单位/Unit:mm

材 质: 进口PA6 尼龙(Polyamide)
温 度:-40 -125 ,短时达到150
产品认证: 美国UL,欧洲CE, 欧洲环保
ROHS,REACH.

防火等级:94V0.

特 性:柔软有韧性,抗扭曲;机械,强度好可以承受重的负载;耐酸,耐切割屑液,润滑油,冷却液等;表面有光泽,耐摩擦;黑色耐紫外线,机械强度高;用 途:可保护电线电缆不受外力磨损及绝缘承载能力:可以承受脚踩和更高强度的重压,不变形,但可以迅速恢复并且本身无任何损伤.

应用场合:风电发电,地铁轨道,电力机车的车厢内使用;机械制造,电气绝缘保护,公共交通

设备:照明设备;汽车制造;航空设备;

使用方法:将电线电缆穿入管内,再配合日成系列软管接头使用即可.

备 注:特殊按包装长度有起订量要求.

Material:PA (Polyamide)

Work Temperature:-40 to125 ,
150 in short time

Color:black

Certificates: CE,ROHS,REACH.

Characteristics:good luster of exterior,stronger machinism loading, perfect flexible

Functions:insulated,protect cables and wires

Loading ability:uneasy to change shape,reshape speedly without hurt body

Where to use:Equipment,machines, electricity sets,and so on.

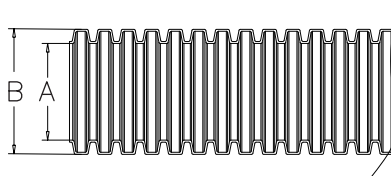
How to use:insert cables or wires to RCCN flexible conduit

Remarks: special packing length come with MOQ work temperature

tested according to RCCN factory test machines

型号	Item No.	规格	内径	外径	静态弯曲半径	动态弯曲半径	包装
黑色 Black Ral9005	深灰色 Gray Ral7037	Sizes	I.D. A	O.D. B	Stat.r	Dyn.r	Packing M
BG-07NBV0	BG-07NGV0	1/4"	6.5	10.0	13	35	100M
BG-10NBV0	BG-10NGV0	5/16"	10.0	13.0	20	45	100M
BG-12NBV0	BG-12NGV0	-	12.0	15.8	35	55	100M
BG-15NBV0	BG-15NGV0	3/8"	14.3	18.5	40	65	100M
BG-17NBV0	BG-17NGV0	1/2"	17.0	21.2	45	75	100M
BG-23NBV0	BG-23NGV0	3/4"	23.0	28.5	55	100	50M
BG-29NBV0	BG-29NGV0	1"	29.0	34.5	65	120	50M
BG-36NBV0	BG-36NGV0	1 1/4"	36.0	42.5	90	150	50M
BG-48NBV0	BG-48NGV0	2"	48.0	54.5	100	190	25M
BG-08NBV0	BG-08NGV0	9/32"	8.0	11.5	13	25	100M
BG-11NBV0	BG-11NGV0	-	11.0	14.0	20	45	100M
BG-16NBV0	BG-16NGV0	-	14.5	20.0	45	75	100M
BG-20NBV0	BG-20NGV0	-	20.0	25.0	50	85	50M
BG-25NBV0	BG-25NGV0	-	25.5	31.5	50	110	50M

RCCN 日成PA尼龙剖开式波纹管 Polyethylene Corrugated Tubing



Ral7037
Ral9012
Ral2003

单位/Unit:mm

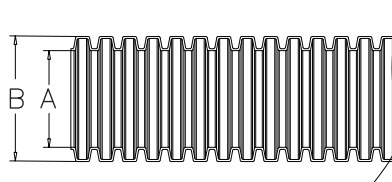
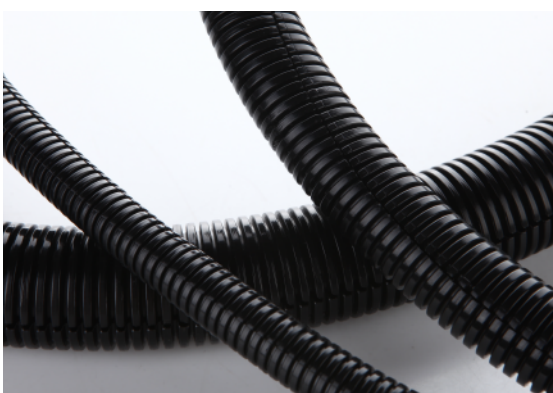
型号 Item No.	规格	内径 I.D.	外径 O.D.	静态弯曲半径 Stat.r	动态弯曲半径 Dyn.r	包装 Packing	
黑色 Black Ral9005	深灰色 Gray Ral7037	Sizes	A	B	M		
BGR-07NB	BGR-07NG	1/4"	6.5	10.0	15	35	100M
BGR-10NB	BGR-10NG	5/16"	10.0	13.0	20	45	100M
BGR-12NB	BGR-12NG	-	12.0	15.8	25	55	100M
BGR-15NB	BGR-15NG	3/8"	14.3	18.5	35	65	100M
BGR-17NB	BGR-17NG	1/2"	17.0	21.2	40	75	100M
BGR-23NB	BGR-23NG	3/4"	23.0	28.5	45	100	50M
BGR-29NB	BGR-29NG	1"	29.0	34.5	55	120	50M
BGR-36NB	BGR-36NG	1 1/4"	36.0	42.5	65	150	50M
BGR-48NB	BGR-48NG	2"	48.0	54.5	80	190	25M
BGR-08NB	BGR-08NG	9/32"	8.0	11.5	13	25	100M
BGR-11NB	BGR-11NG	-	11.0	14.0	20	45	100M
BGR-16NB	BGR-16NG	-	14.5	20.0	25	55	100M
BGR-20NB	BGR-20NG	-	20.0	25.0	50	85	50M
BGR-25NB	BGR-25NG	-	25.5	31.5	50	110	50M



材 质: 进口PA6 尼龙(Polyamide)
温 度:-40 -125 ,短时达到150
产品认证: 欧洲CE, 欧洲环保ROHS,REACH.
下表型号数据参考BG系列

Material:PA
Certificate: CE, ROHS
Features:easy to stall , suitabel to wire fixed in both terminals
How to use:input the cables or wires
Datas,please refer to BG series

RCCN 日成PAV0尼龙阻燃及剖开波纹管 Polyethylene Corrugated Tubing



Ral9005
Ral7037
Ral7001
Ral9012
Ral2003

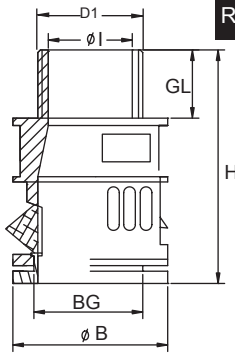
材 质:PA
产品认证: 欧洲CE, 欧洲环保ROHS
特 性:安装容易, 适合于两端线头已固定
使用方法:将电线电缆放入管内即可
下表型号数据参考 BG系列

Material:PA
Certificate: CE, ROHS
Features:easy to stall , suitabel to wire fixed in both terminals
How to use:input the cables or wires
Datas,please refer to BG series

单位/Unit:mm

黑色阻燃剖开 Black Ral9005	深灰阻燃剖开 Gray Ral7037	白色 White Ral9012	白色阻燃 White Ral9012	白色剖开 White Ral9012	橙色 Orange Ral2003	橙色剖开 Orange Ral2003	规格 Sizes	内径 I.D. A	外径 O.D. B	静态弯曲半径 Stat.r	动态弯曲半径 Dyn.r	包装 Packing M
BGR-07NBV0	BGR-07NGV0	BG-07NW	BG-07NWW0	BGR-07NW	BG-07N橙	BGR-07N橙	1/4"	6.5	10.0	15	35	100M
BGR-10NBV0	BGR-10NGV0	BG-10NW	BG-10NWW0	BGR-10NW	BG-10N橙	BGR-10N橙	5/16"	10.0	13.0	20	45	100M
BGR-12NBV0	BGR-12NGV0	BG-12NW	BG-12NWW0	BGR-12NW	BG-12N橙	BGR-12N橙	-	12.0	15.8	25	55	100M
BGR-15NBV0	BGR-15NGV0	BG-15NW	BG-15NWW0	BGR-15NW	BG-15N橙	BGR-15N橙	3/8"	14.3	18.5	35	65	100M
BGR-17NBV0	BGR-17NGV0	BG-17NW	BG-17NWW0	BGR-17NW	BG-17N橙	BGR-17N橙	1/2"	17.0	21.2	40	75	100M
BGR-23NBV0	BGR-23NGV0	BG-23NW	BG-23NWW0	BGR-23NW	BG-23N橙	BGR-23N橙	3/4"	23.0	28.5	45	100	50M
BGR-29NBV0	BGR-29NGV0	BG-29NW	BG-29NWW0	BGR-29NW	BG-29N橙	BGR-29N橙	1"	29.0	34.5	55	120	50M
BGR-36NBV0	BGR-36NGV0	BG-36NW	BG-36NWW0	BGR-36NW	BG-36N橙	BGR-36N橙	1 1/4"	36.0	42.5	65	150	50M
BGR-48NBV0	BGR-48NGV0	BG-48NW	BG-48NWW0	BGR-48NW	BG-48N橙	BGR-48N橙	2"	48.0	54.5	80	190	25M
BGR-08NBV0	BGR-08NGV0	BG-08NW	BG-08NWW0	BGR-08NW	BG-08N橙	BGR-08N橙	9/32"	8.0	11.5	13	25	100M
BGR-11NBV0	BGR-11NGV0	BG-11NW	BG-11NWW0	BGR-11NW	BG-11N橙	BGR-11N橙	-	11.0	14.0	20	45	100M
BGR-16NBV0	BGR-16NGV0	BG-16NW	BG-16NWW0	BGR-16NW	BG-16N橙	BGR-16N橙	-	14.5	20.0	25	55	100M
BGR-20NBV0	BGR-20NGV0	BG-20NW	BG-20NWW0	BGR-20NW	BG-20N橙	BGR-20N橙	-	20.0	25.0	50	85	50M
BGR-25NBV0	BGR-25NGV0	BG-25NW	BG-25NWW0	BGR-25NW	BG-25N橙	BGR-25N橙	-	25.5	31.5	50	110	50M

RCCN 日成BGQ型快速软管接头 Quick Conduit Connector



Ral9005

Ral7037



螺纹规格:公制螺纹(Metric)/德制螺纹(PG)/英制螺纹(G)

产品材质:尼龙66(NYLON66)原料制成

产品认证:欧洲CE,ROHS

防火等级:UL94V-2

颜色种类:黑色Ral9005、灰色Ral7037.

工作温度:-40°C至85°C

产品特性:装卸只需拨插无需工具

备注:含螺母,不带防水垫片,需外购

Thread:Metric:PG,G Material:NYLON66

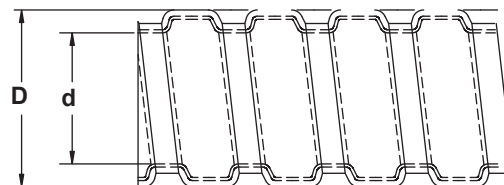
Certificates:CE,ROHS Fireproof rate:UL94V-2

Color:Black-B,Gray-G. Work temperature:-40°C to 85°C

单位/Unit:mm

型号 Item No.		螺纹规格	对应软管	螺纹外径	机板开孔	螺纹长度	内孔径	外径	高度	包装
黑色 Black Ral9005	深灰色 Gray Ral7037	Thread	Tubing outer BG	Thread O.D. D1	Panel Mounting Hole	Thread Length GL	Smallest inner I Ø	Largest outer B Ø	Total length H	Std.Pkg. pcs
公制螺纹BGQ-M										
BGQ-M12B (BG07)	BGQ-M12G (BG07)	M12×1.5	BG-07	12	12-12.3	10	7	17.0	32.5	100PCS
BGQ-M12B (BG10)	BGQ-M12G (BG10)	M12×1.5	BG-10	12	12-12.3	10	7	20.0	32.5	
BGQ-M16B (BG07)	BGQ-M16G (BG07)	M16×1.5	BG-07	16	16-16.3	10	10	17.0	32.5	
BGQ-M16B (BG10)	BGQ-M16G (BG10)	M16×1.5	BG-10	16	16-16.3	10	12	20.0	32.5	
BGQ-M16B (BG12)	BGQ-M16G (BG12)	M16×1.5	BG-12	16	16-16.3	10	12	23.0	37.0	
BGQ-M18B (BG10)	BGQ-M18G (BG10)	M18×1.5	BG-10	18	18-18.3	10	10	20.0	32.5	
BGQ-M18B (BG12)	BGQ-M18G (BG12)	M18×1.5	BG-12	18	18-18.3	10	10	23.0	37.0	
BGQ-M18B (BG15)	BGQ-M18G (BG15)	M18×1.5	BG-15	18	18-18.3	11	13	25.5	40.0	
BGQ-M20B (BG10)	BGQ-M20G (BG10)	M20×1.5	BG-10	20	20-20.3	10	12	23.0	37.0	
BGQ-M20B (BG12)	BGQ-M20G (BG12)	M20×1.5	BG-12	20	20-20.3	10	12	23.0	37.0	
BGQ-M20B (BG15)	BGQ-M20G (BG15)	M20×1.5	BG-15	20	20-20.3	11	13	25.5	40.0	
BGQ-M20B (BG17)	BGQ-M20G (BG17)	M20×1.5	BG-17	20	20-20.3	12	15	29.5	43.5	
BGQ-M24B (BG17)	BGQ-M24G (BG17)	M24×1.5	BG-17	24	24-24.4	12	17	29.5	43.5	
BGQ-M25B (BG17)	BGQ-M25G (BG17)	M25×1.5	BG-17	25	25-25.4	12	17	29.5	43.5	
BGQ-M25B (BG20)	BGQ-M25G (BG20)	M25×1.5	BG-20	25	25-25.4	13	20	37.0	46.0	
BGQ-M25B (BG23)	BGQ-M25G (BG23)	M25×1.5	BG-23	25	25-25.4	12	20	37.0	46.0	
BGQ-M25B (BG29)	BGQ-M25G (BG29)	M25×1.5	BG-29	25	25-25.4	12	20	37.0	46.0	
BGQ-M27B (BG23)	BGQ-M27G (BG23)	M27×1.5	BG-23	27	27-27.4	12	23	37.0	46.0	
BGQ-M30B (BG23)	BGQ-M30G (BG23)	M30×2.0	BG-23	30	30-30.4	12	23	37.0	46.0	
BGQ-M32B (BG23)	BGQ-M32G (BG23)	M32×1.5	BG-23	32	32-32.4	12	30	37.0	46.0	
BGQ-M32B (BG29)	BGQ-M32G (BG29)	M32×1.5	BG-29	32	32-32.4	12	30	44.0	48.0	
BGQ-M36B (BG29)	BGQ-M36G (BG29)	M36×2.0	BG-29	36	36-36.4	12	30	44.0	48.0	
BGQ-M40B (BG29)	BGQ-M40G (BG29)	M40×1.5	BG-29	40	40-40.4	12	35	51.5	50.0	
BGQ-M40B (BG36)	BGQ-M40G (BG36)	M40×1.5	BG-36	40	40-40.4	12	35	51.5	50.0	
BGQ-M48B (BG36)	BGQ-M48G (BG36)	M48×2.0	BG-36	48	48-48.4	12	35	51.5	50.0	
BGQ-M50B (BG36)	BGQ-M50G (BG36)	M50×1.5	BG-36	50	50-50.4	12	35	51.5	50.0	
BGQ-M50B (BG48)	BGQ-M50G (BG48)	M50×1.5	BG-48	50	50-50.4	12	36	51.5	50.0	
BGQ-M56B (BG48)	BGQ-M56G (BG48)	M56×2.0	BG-48	56	56-56.4	15	48	65.5	54.0	
BGQ-M63B (BG48)	BGQ-M63G (BG48)	M63×1.5	BG-48	63.	63-63.4	15	48	65.5	54.0	
德制螺纹BGQ-P										
BGQ-PG7B(BG07)	BGQ-PG7G(BG07)	PG7	BG-07	12.5	12.5-12.8	10	7	20.0	32.5	100PCS
BGQ-PG7B(BG10)	BGQ-PG7G(BG10)	PG7	BG-10	12.5	12.5-12.8	10	7	20.0	32.5	
BGQ-PG9B(BG10)	BGQ-PG9G(BG10)	PG9	BG-10	15.2	15.2-15.5	10	7	20.0	32.5	
BGQ-PG11B(BG10)	BGQ-PG11G(BG10)	PG11	BG-10	18.6	18.6-18.9	10	7	20.0	32.5	
BGQ-PG11B(BG12)	BGQ-PG11G(BG12)	PG11	BG-12	18.6	18.6-18.9	10	13	23.0	37.0	
BGQ-PG13.5B(BG10)	BGQ-PG13.5G(BG10)	PG13.5	BG-10	20.4	20.4-20.7	10	13	20.0	32.5	
BGQ-PG13.5B(BG12)	BGQ-PG13.5G(BG12)	PG13.5	BG-12	20.4	20.4-20.7	10	13	23.0	37.0	
BGQ-PG13.5B(BG15)	BGQ-PG13.5G(BG15)	PG13.5	BG-15	20.4	20.4-20.7	11	14	25.5	40.0	
BGQ-PG13.5B(BG17)	BGQ-PG13.5G(BG17)	PG13.5	BG-17	20.4	20.4-20.7	12	16	29.5	43.5	
BGQ-PG16B(BG17)	BGQ-PG16G(BG17)	PG16	BG-17	22.5	22.5-22.8	12	16	29.5	43.5	
BGQ-PG21B(BG20)	BGQ-PG21G(BG20)	PG21	BG-20	28.3	28.3-28.7	12	24	37.0	46.0	
BGQ-PG21B(BG23)	BGQ-PG21G(BG23)	PG21	BG-23	28.3	28.3-28.7	12	24	37.0	46.0	
BGQ-PG29B(BG29)	BGQ-PG29G(BG29)	PG29	BG-29	37.0	37.0-37.4	12	30	44.0	48.5	
BGQ-PG36B(BG36)	BGQ-PG36G(BG36)	PG36	BG-36	47.0	47.0-47.4	12	37	51.5	50.5	
BGQ-PG42B(BG48)	BGQ-PG42G(BG48)	PG42	BG-48	54.0	54.0-54.4	12	44	65.5	54.0	
BGQ-PG48B(BG48)	BGQ-PG48G(BG48)	PG48	BG-48	59.3	59.3-59.7	15	48	65.5	54.0	
英制螺纹BGQ-G										
BGQ-G3/8B(BG07)	BGQ-G3/8G(BG07)	G3/8	BG-07	16.5	16.5	10	7	20.0	32.5	50PCS
BGQ-G1/2B(BG12)	BGQ-G1/2G(BG12)	G1/2	BG-12	21.3	21.3	10	13	23.0	37.0	
BGQ-G1/2B(BG17)	BGQ-G1/2G(BG17)	G1/2	BG-17	21.3	21.3	12	16	29.5	43.5	
BGQ-G3/4B(BG20)	BGQ-G3/4G(BG20)	G3/4	BG-20	26.6	26.6	12	24	37.0	46.0	10PCS
BGQ-G3/4B(BG23)	BGQ-G3/4G(BG23)	G3/4	BG-23	26.6	26.6	12	24	37.0	46.0	
BGQ-G1B(BG29)	BGQ-G1G(BG29)	G1	BG-29	33.2	33.2	12	30	44.0	48.5	

RCCN 日成MCR型金属软管 Metal Flexible Conduit



产品材质:(内层):热浸镀锌钢板及特殊绝缘处理。
(外层):PVC(黑色抗紫外线, 防老化)

产品认证:欧洲CE,欧洲环保RoHS

防火等级:UL94V-0,低烟无毒

颜色种类:黑色或灰色

工作温度:-30 到+85 ,瞬间可耐高达100

产品特性:1软管有极佳之防水,绝缘性, 抗拉性

2表面加PVC被覆, 且PVC塑料其中添加了防火阻燃剂,并加抗UV紫外线和防止老化作用之成份。

3结构为反扣型增加抗拉强度, 不容易折断或变形。

4具超柔软与极佳弯曲性能,内部平滑构造在穿引电线时极容易。

应用领域:铁路,机车,交通系统工程,空调,各种机械,自动控制设备,发电厂,化工,输配电系统,通讯系统,基地台架设,船舶、大厦、厂房内及屋外露出部分之配线保护。

使用方法:先将电线穿入管内,再配合金属软管固定头即可。

用途:保护电线电缆以及达到绝缘,防水,并可增进线缆弯曲美观。

Material:(inner):zinc coated steel, special insulated processed.
(outer):UL approved PVC

Certificates:CE

Fireproof class:UL94V-2, low smoking, poison free

Color:black, gray

Work T.: -10 to +80 ,100 in a short time

Products Characteristics:1.good waterproof,insulated,retention

2.PVC wrapped , PVC is UV and inflammation resistant

3.uneasy to break and construction changing, for its special design

4.smooth inside, make the wire and cable install easily

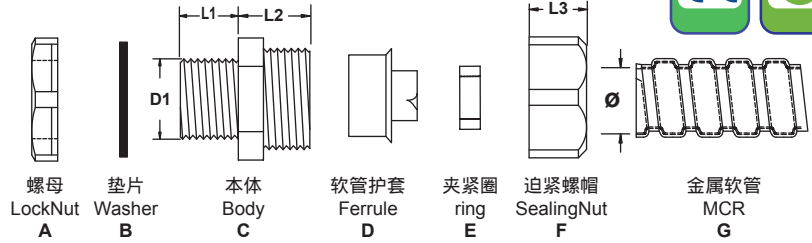
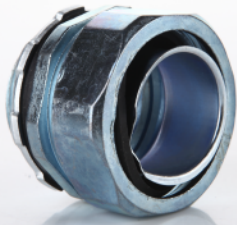
Use domain:railway,communicate project,air-dondition,machines.roboticized equipments,power plant ships and so on

Use way:insert the cables into the conduit, then fix the correct connectors.

单位/Unit:mm

型号 Item No.		规格 Trade Sizes		内径 I.D. d	外径 O.D. D	弯曲半径 Bending Radius mm ± 10%	配套金属头 Suitable metal connector NBG	包装 Packing M
黑色Black	灰色Gray	公制 Metric ø	英制 British					
MCR-01B	MCR-01G	ø 6	3/16"	6.0±0.3	9.2±0.5	40	NBG-01	100M
MCR-02B	MCR-02G	ø 8	5/16"	8.0±0.3	11.8±0.5	45	NBG-02	100M
MCR-03B	MCR-03G	ø 10	1/4"	10.0±0.3	14.0±0.5	55	NBG-03	100M
MCR-04B	MCR-04G	ø 13	3/8"	12.0±0.3	16.3±0.5	65	NBG-04	100M
MCR-05B	MCR-05G	ø 16	1/2"	15.0±0.3	20.2±0.5	85	NBG-05	100M
MCR-06B	MCR-06G	ø 20	3/4"	19.5±0.3	24.5±0.5	100	NBG-06	50M
MCR-08B	MCR-08G	ø 25	1"	25.0±0.3	30.5±0.5	120	NBG-08	50M
MCR-10B	MCR-10G	ø 32	1 1/4"	31.5±0.3	38.0±0.5	150	NBG-10	25M
MCR-12B	MCR-12G	ø 38	1 1/2"	38.0±1.0	44.6±1.0	180	NBG-12	25M
MCR-16B	MCR-16G	ø 51	2"	50.0±1.0	58.0±1.0	220	NBG-16	10M
MCR-20B	MCR-20G	ø 64	2 1/2"	62.0±1.5	74.5±1.5	310	NBG-20	10M
MCR-24B	MCR-24G	ø 75	3"	73.0±2.0	85.5±2.0	350	NBG-24	10M
MCR-32B	MCR-32G	ø100	4"	100.0±3.0	110.5±3.0	410	NBG-32	10M
MCR-36B	MCR-36G	ø125	5"	125.0±3.0	135.5±3.0	460	NBG-32	5M
MCR-38B	MCR-38G	ø150	6"	150.0±4.0	160.5±4.0	500	NBG-32	5M

RCCN 日成NBG型金属软管接头 Metal Flexible Conduit Fittings



螺母规格:管螺纹G/PF牙,公制螺纹Metric,德制螺纹 PG
 产品材质:A.C.F部位优质加厚型锌合金制成.B.E丁腈橡胶(NBR)
 制成.D铁皮制成.

产品认证:欧洲CE,欧洲环保RoHS / 颜色:金属色(银白色)
 防护等级:IP54

工作温度:-40°C至100°C,瞬间可耐高达120°C.

产品特性: 1.加厚型锌合金镀锌或镀铬,外型美观,结构紧密,强度高.
 2.软管护套设计与软管相扣接紧之设计,配合迫紧头装配省时
 便利,抗拉力特强,
 3.可防水、防尘、抗盐、耐酸碱、酒精、油、脂及一般溶剂.
 4.除以下标准规格外,可另按需求任意变动大小及螺纹标准.

备注:成品均配带螺母A及防水垫片B,可定制特殊规格不同的螺纹和
 配套和管.

Thread:G,Metric, PG

Material:A.C.F are made from zinc metal.B.E
 are made of rubber (NBR).D is made
 of sheet iron .

Certificates:CE

Color:Argentine

Protect class:IP6

Work T.: -40°C to 100°C, 120°C in a short time.

Products characteristics: 1.thickness added zinc metal,good looking

2.common impregnant resistant,such as water,salty,alcohol,oil, grease and so on.

3.we can adjust the sizes according to your request.

Marks:The finished goods are including locknut and washer.



单位/Unit:mm

型号 Item No.		螺纹标准 Thread G/M/PG	配套日成金属软管MCR Suitable RCCN metal flexible conduit MCR			螺纹外径 Thread O.D. D1	螺纹长度 Thread Length L1	接合长度 Joint Length L2+L3	包装 Packing pcs
锌合金	黄铜镀镍		对应型号 Corresponding item no	公制 Metric ø	英制 British				
管螺纹 /Tube thread NBG-G									
NBG-01G		G1/4"	MCR-01	6	3/16"	13.15	8	16	100
NBG-02G		G1/4"	MCR-02	8	5/16"	13.15	8	16	100
NBG-03G	TNBG-03G	G3/8"	MCR-03	10	1/4"	16.66	8	17	100
NBG-04G	TNBG-04G	G3/8"	MCR-04	13	3/8"	16.66	8	18	100
NBG-05G	TNBG-05G	G1/2"	MCR-05	16	1/2"	20.95	11	23	100
NBG-06G	TNBG-06G	G3/4"	MCR-06	20	3/4"	26.44	14	22	50
NBG-08G	TNBG-08G	G1"	MCR-08	25	1"	33.25	15	28	50
NBG-10G	TNBG-10G	G1 1/4"	MCR-10	32	1 1/4"	42.91	15	30	25
NBG-12G	TNBG-12G	G1 1/2"	MCR-12	38	1 1/2"	47.8	16	32	25
NBG-16G	TNBG-16G	G2"	MCR-16	51	2"	59.6	18	34	10
NBG-20G		G2 1/2"	MCR-20	64	2 1/2"	75.18	22	38	10
NBG-24G		G3"	MCR-24	80	3"	87.88	22	46	5
NBG-32G		G4"	MCR-32	100	4"	113	24	50	5
公制螺牙 /Metric thread NBG-M									
NBG-01M		M14*1.5	MCR-01	6	3/16"	M14*1.5	8	16	100
NBG-02M		M14*1.5	MCR-02	8	5/16"	M14*1.5	8	16	100
NBG-03M	TNBG-03M	M16*1.5	MCR-03	10	1/4"	M16*1.5	8	17	100
NBG-04M	TNBG-04M	M16*1.5	MCR-04	13	3/8"	M16*1.5	8	18	100
NBG-05M	TNBG-05M	M20*1.5	MCR-05	16	1/2"	M20*1.5	11	23	100
NBG-06M	TNBG-06M	M25*1.5	MCR-06	20	3/4"	M25*1.5	14	22	50
NBG-08M	TNBG-08M	M32*1.5	MCR-08	25	1"	M32*1.5	15	28	50
NBG-10M	TNBG-10M	M40*1.5	MCR-10	32	1 1/4"	M40*1.5	15	30	25
NBG-12M	TNBG-12M	M50*1.5	MCR-12	38	1 1/2"	M50*1.5	16	32	25
NBG-16M	TNBG-16M	M63*1.5	MCR-16	51	2"	M63*1.5	18	34	10
NBG-20M		M76*2	MCR-20	64	2 1/2"	M76*2	22	38	10
NBG-24M		M88*2	MCR-24	80	3"	M88*2	22	46	5
NBG-32M		M114*2	MCR-32	100	4"	M114*2	24	50	5
德制螺纹 /Metric thread NBG-PG									
NBG-03P	TNBG-03P	PG9	MCR-03	10	1/4"	15.2	8	16	100
NBG-04P	TNBG-04P	PG11	MCR-04	13	3/8"	18.6	9	17	100
NBG-05P	TNBG-05P	PG13.5	MCR-05	16	1/2"	20.4	11	23	100
NBG-06P	TNBG-06P	PG21	MCR-06	20	3/4"	28.3	14	23	50
NBG-08P	TNBG-08P	PG29	MCR-08	25	1"	37.0	15	28	50
NBG-10P	TNBG-10P	PG29	MCR-10	32	1 1/4"	37.0	15	30	25
NBG-12P	TNBG-12P	PG36	MCR-12	38	1 1/2"	47.0	16	32	25
NBG-16P	TNBG-16P	PG48	MCR-16	51	2"	59.3	18	34	10