



PX external thread Y type three-way pipe joint

PX external thread Y type three-way pipe joint

Material: plastic socket: POM, body: 0BT, adapter: brass

Operating pressure range: 0-10kgf/cm²

Operating temperature range: -20~70°C

General hose: PU tube or nylon hose

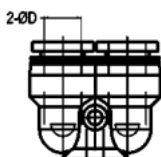
Color: plastic socket: blue, body: black, adapter: brass (not electroplated)

1. It has a variety of models and specifications and is used in various pneumatic systems.
2. Excellent flow performance, can pass the flow of the same volume as the inner diameter of the trachea.
3. The threaded part is coated with sealant to ensure that there is no leakage in the threaded connection part.



PX external thread Y type three-way pipe joint

Specification



Item No.	OD	Connection thread/R	Package /PCS
PX4-M5	4	M5x0.8	100
PX4-01	4	PT1/8	100
PX4-02	4	PT1/4	100
PX4-04	4	PT1/2	100
PX6-M5	6	M5x0.8	100
PX6-01	6	PT1/8	100
PX6-02	6	PT1/4	100
PX6-03	6	PT3/8	100
PX6-04	6	PT1/2	100
PX8-01	8	PT1/8	100
PX8-02	8	PT1/4	100
PX8-03	8	PT3/8	100
PX8-04	8	PT1/2	100
PX10-01	10	PT1/8	50
PX10-02	10	PT1/4	50
PX10-03	10	PT3/8	50
PX10-04	10	PT1/2	50
PX12-01	12	PT1/8	50
PX12-02	12	PT1/4	50
PX12-03	12	PT3/8	50
PX12-04	12	PT1/2	25

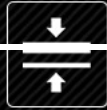
Product Show

高效耐用 / 性能稳定

HIGH PERFORMANCE DURABILITY / PERFORMANCE STABILITY



黄铜材质



耐高压



不脱扣



密封性强



寿命长




安装便捷

不同大小，形式多样

DIFFERENT SIZES, VARIOUS FORMS

总有一款适合你



 注：购买前请确认您的设备相应直径。

黄铜品质坚固耐用

— 结实更耐用 —

结构先进、性能良好、经久耐用



耐高压不易脱扣

— 使用更放心 —

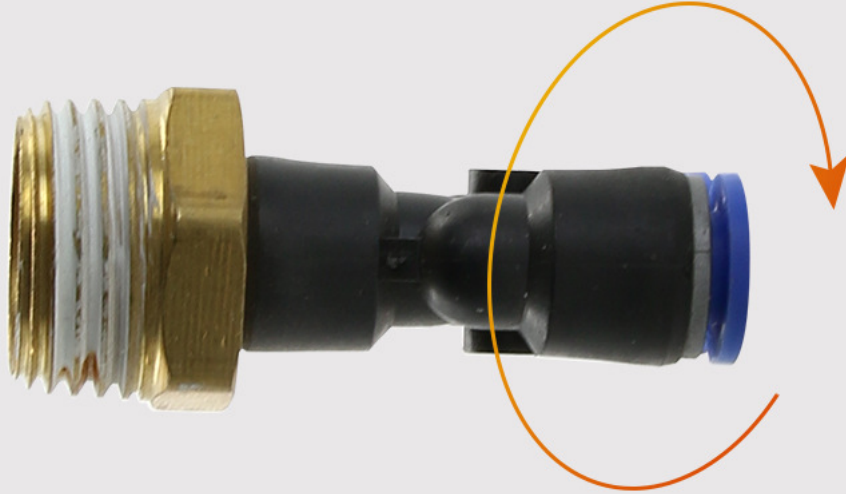
能承受更大更强的压力而不脱扣



360°灵巧转动

— 安装更方便 —

简单灵巧，即使安装后，塑管也可 360°转动



椭圆型释放环

— 密封性更好 —

维管螺纹预涂聚四氟乙烯防漏胶，密封性能好

